

GRACIOUS AMENITIES, ATTENTIVE STAFF

 | O. HENRY HOTEL







Social Lobby



Don Rives Cloister Garden



Green Valley Grill



# O. HENRY HOTEL®

- Our community-centered hotel features bespoke events in elegant spaces with specially designed menus for any occasion, whether you have 5 or 150 guests. No two events are exactly alike, and personalized meetings and events are an O. Henry specialty. As an employee-owned boutique hotel, we offer exceptional service and custom menus to fit any need. All of your meeting needs will be taken care of by a team of experienced culinary, event and hotel operations professionals who have an honest desire to be of genuine service to our guests.
- Four event rooms total 5,000 square feet of gracious, flexible space, each with its own identity. Most of our meeting rooms have outside windows and natural light, and they are equipped with state of the art individual lighting and sound, as well as high speed Internet access.
- 130 oversized guestrooms (including 10 suites) feature Magi Beds designed for a great night's sleep, separate bath with elevated soaking tubs and glass enclosed showers and dressing rooms, comfortable furnishings, fresh air, Wi-Fi, and in-room dining.
- Other hotel amenities include a 24-hour fitness center, outdoor pool, complimentary bikes and afternoon tea.
- Green Valley Grill's fresh seasonal food uses old-world European culinary sensibilities. When you add an eclectic décor, alfresco dining in the Courtyard garden, extensive wine list and a friendly bar, you will imagine that you have traveled farther than you did. Green Valley Grill caters all hotel events.
- With its 25-foot high ceiling and 25-foot wide arched window looking onto our Don Rives Cloister Garden, the grand Social Lobby's setting takes you back to the 1920's and 30's. Share a moment with friends for traditional afternoon tea or sipping pre-dinner cocktails in the lobby.
- O. Henry is adjacent to Friendly Shopping Center, Greensboro Coliseum, Tanger Center for Performing Arts and a short drive to downtown Greensboro. It is only a stone's throw away from its sister, the AAA Four Diamond/LEED Platinum Proximity Hotel.









Dining



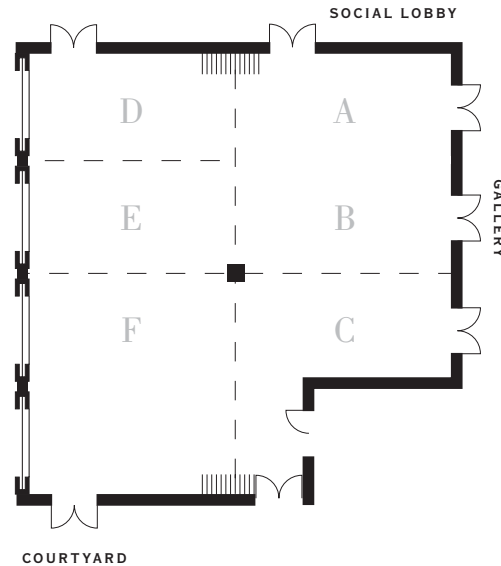
Conference



Cocktail



# O. HENRY HOTEL®



## CALDWELL ROOM

The largest event space opens to a grand Social Lobby and a wonderful gallery that connects the hotel with the Green Valley Grill. With four arched windows and access to an intimate courtyard area, it accommodates up to 150 seated guests and 175 at a standing reception. This room can be divided into a multitude of combinations.

CEILING: 12'6" – 10'6"

	DIMENSIONS	SQ. FEET	CONVERTIBLE SEATING CAPACITIES					
			THEATRE	SCHOOLROOM	CONFERENCE	U-SHAPE	COCKTAIL	DINING
Caldwell	56' x 58'	2982	175	100	NA	NA	175	150
Salons C, D	14' x 28'	392	25	12	10	NA	25	16
Salons DE	26' x 28'	728	50	24	20	16	50	32
Salons AB	28' x 30'	840	50	24	20	20	50	32
Salon CF	29' x 56'	1358	60	32	30	25	60	48
Salon ABC	30' x 43'	1290	75	36	30	25	75	56
Salon DEF	26' x 58'	1508	100	50	30	30	100	80
Salon ABDE	28' x 56'	1568	100	50	30	30	100	80









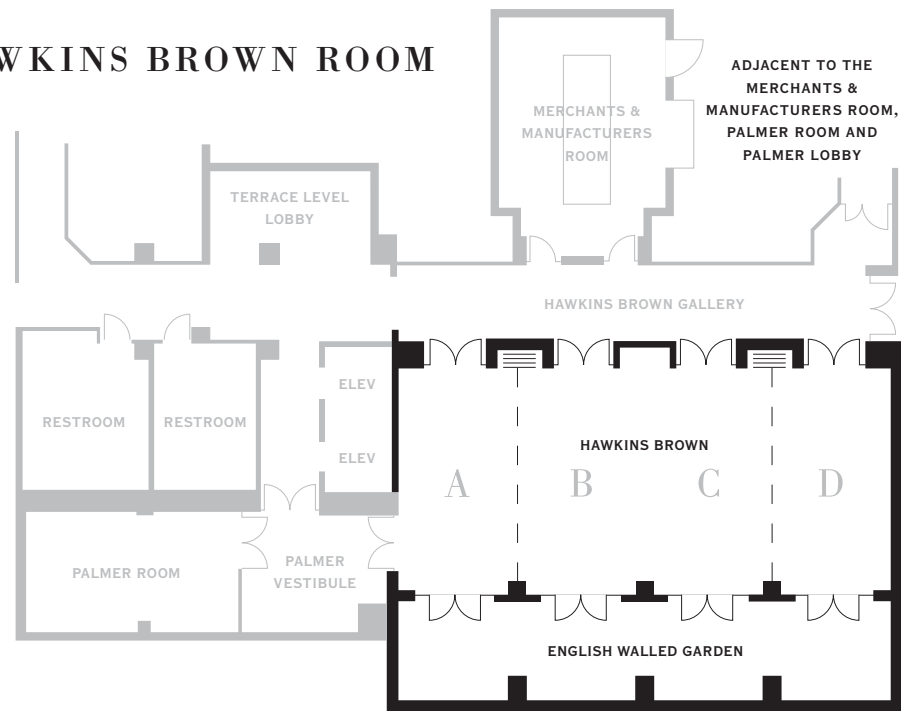
Bacchanal alfresco dining in the English-inspired Walled Garden



Dinner

# O. HENRY HOTEL®

## HAWKINS BROWN ROOM



Located on the lower level, the Hawkins Brown Room accommodates up to 80 seated guests and 100 for a standing reception. With its antiqued mirrored walls, crystal-draped lighting and custom sconces, this elegant room can be divided into three sections or combined with the Palmer Room, Vestibule and Merchants & Manufacturers Room for grand affairs for up to 200 guests. Four large glass doors open onto an English-inspired walled garden with country vista murals by artist-in-residence Chip Holton.

CEILING: 9'6" – 9'11"

	DIMENSIONS	SQ. FEET	CONVERTIBLE SEATING CAPACITIES					
			THEATRE	SCHOOLROOM	CONFERENCE	U-SHAPE	COCKTAIL	DINING
Hawkins Brown	27' x 57'	1539	100	50	30	25	100	80
Salons A, D	14' x 27'	378	25	12	10	NA	25	16
Salon BC	27' x 28'	756	50	24	20	16	50	40
Salons ABC, BCD	27' x 43'	1161	75	36	25	20	75	56
Walled Garden	11' x 57'	627	20	NA	NA	NA	30	15
Hawkins Brown + Palmer	27' x 57'	1539	100	50	30	25	100	80









Dining

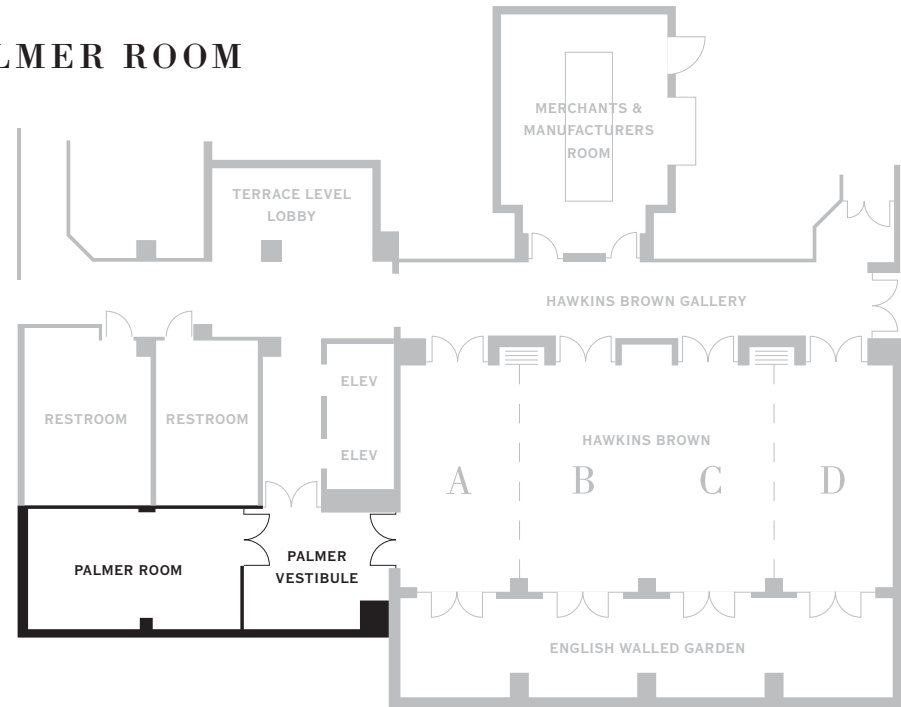


Cocktail



O. HENRY HOTEL®

## PALMER ROOM



Located on the lower level adjacent to the Hawkins Brown Room, the Palmer Room accommodates up to 22 seated guests and 35 for a cocktail reception. With rich honeyed pine paneling, limestone floors, walnut tables, leather Chippendale chairs, 70-inch HD monitor, this distinctive room is perfect for executive meetings or intimate celebrations. For larger events, incorporate all of the event space on the lower level to create a residential ambiance for your grand event for 200.

CEILING: 9'6" – 10'6"

	DIMENSIONS	SQ. FEET	CONVERTIBLE SEATING CAPACITIES					
			THEATRE	SCHOOLROOM	CONFERENCE	U-SHAPE	COCKTAIL	DINING
Palmer Room	14' x 25'	350	NA	NA	22	NA	35	18







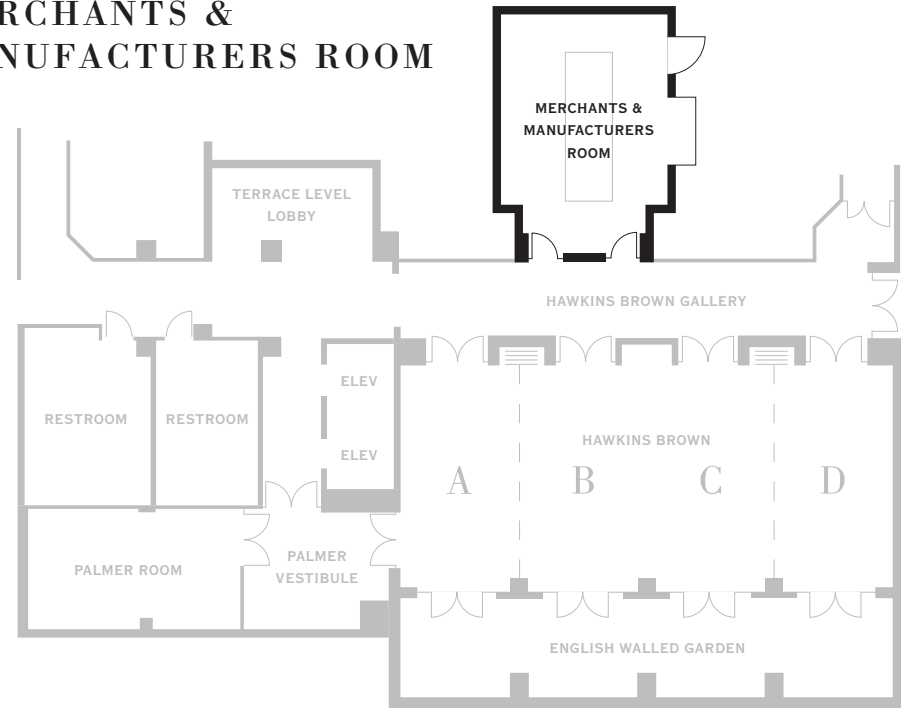


Dining



# O. HENRY HOTEL®

## MERCHANTS & MANUFACTURERS ROOM



An exceptional setting for intimate groups of 14 or fewer people, this room draws its inspiration from the wine tasting rooms found adjacent to fine subterranean wine cellars. The room has a vaulted wooden ceiling, handmade floor tiles set between large heart-pine planks, a wall of enclosed wine racks, high-backed leather chairs and tapestries. Table size can be adjusted.

CEILING: 9'11" – 7'2"

	DIMENSIONS	SQ. FEET	CONVERTIBLE SEATING CAPACITIES					
			THEATRE	SCHOOLROOM	CONFERENCE	U-SHAPE	COCKTAIL	DINING
M&M	14' x 19'	266	NA	NA	14	NA	NA	14









Pavilion — Dining



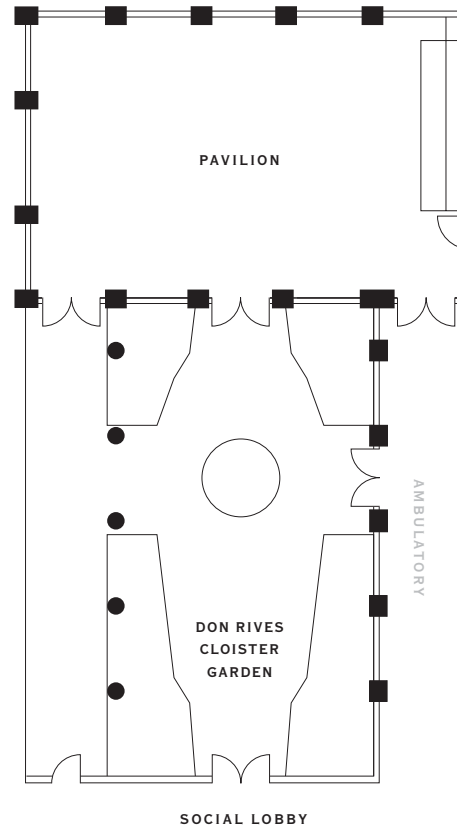
Don Rives Cloister Garden — Cocktail



Don Rives Cloister Garden — Theatre/Ceremony



# O. HENRY HOTEL®



## PAVILION & DON RIVES CLOISTER GARDEN

A peaceful oasis, the Don Rives Cloister Garden, adjoins an orangery-style Pavilion, a sunny window enclosed room. The two areas can be combined for a cocktail party and dinner or a wedding and reception of up to 50 seated guests and 75 at a standing reception. Located adjacent to the hotel Social Lobby, the beautiful garden is a tranquil setting complete with seasonal blooms, a fountain, arbor and flexible seating.

CEILING: 9'10" — 8'0"

	DIMENSIONS	SQ. FEET	CONVERTIBLE SEATING CAPACITIES					
			THEATRE	SCHOOLROOM	CONFERENCE	U-SHAPE	COCKTAIL	DINING
Pavilion	28' x 42'	1176	50	NA	NA	NA	50	50
Garden	44' x 28'	778	50	NA	NA	NA	30	25









Magi Suite



Porter Hospitality Suite



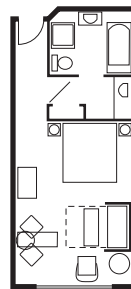
Double Queen



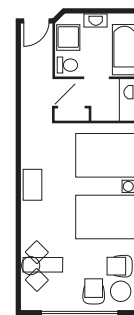
# O. HENRY HOTEL®

## GUESTROOMS & SUITES

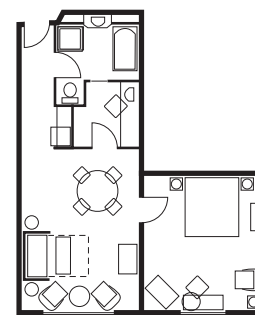
- Plenty of fresh air circulated into guestrooms
- Magi Bed designed for a great night's sleep
- Fitness center
- Outdoor pool
- Business centers
- In-room dining by Green Valley Grill
- HD television with cable and streaming
- Dressing room with two vanities
- Double walls between guestrooms for soundproofing
- Bluetooth Stereo with CD player
- Complimentary high speed WiFi
- New York Times available upon request
- A selection of fantastic magazines
- Shower and separate elevated soaking tub
- Makeup mirror and hairdryer
- In-room safe
- Iron and ironing board
- Two bathrobes
- Aveda™ bath products
- Windows that open
- Counter Culture Coffee, real half-n-half, and a variety of Harney and Sons teas
- Filtered water and ice
- Microwave and mini-fridge
- Desk and ergonomic desk chair
- Two telephones, including a two-line speakerphone
- Private direct dial room access and voicemail
- Alarm clock with USB and extra charging plugs
- Video checkout
- Sleeper sofa (most rooms)
- Romantic mood lighting settings in sleeping and bathing rooms
- Nightlight
- Dry cleaning service
- Multi lingual staff



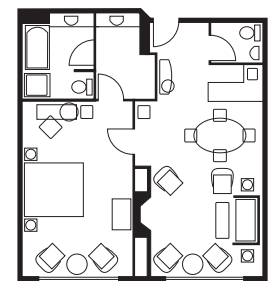
KING



DOUBLE QUEEN



PORTER SUITE



MAGI SUITE



GREEN VALLEY GRILL



GREEN VALLEY GRILL







# O. HENRY HOTEL®

## GREEN VALLEY GRILL

The Green Valley Grill is employee owned and adjacent to the hotel, connected via an interior corridor. Informal elegant dining and seasonal menus use old-world European culinary sensibilities and Mediterranean flavors from locations such as the Tuscan area of Italy or the Provence region of France. Locally sourced food, prepared by a passionate team and served by friendly and competent people, is a recipe for a great dining experience. The friendly bar is sleek and stylish with a long wall of windows, granite bar and a variety of seating options. Enjoy the outdoors in the Courtyard, an intimate, outdoor room, inspired by the hidden urban gardens found throughout Europe. Breakfast, lunch, dinner, and brunch menus are available through in-room dining. Green Valley Grill caters all events at the O. Henry with the same high quality food and service that is found in the restaurant. Pair your meal with artisanal cocktails, craft beers, 500 wines and over 75 wines by the glass. The wine list receives the Wine Spectator "Best of Award of Excellence" each year.

336.854.2015 | [GREENVALLEYGRILL.COM](http://GREENVALLEYGRILL.COM)

## LUCKY 32 SOUTHERN KITCHEN

Located one mile from O. Henry Hotel and employee owned. Lucky 32 Southern Kitchen features exceptional renderings of classic Southern dishes made with plenty of local ingredients. Unwind in the cosy dining room, bar or outside on the garden Veranda with plenty of shade and fans. The wine and beer list features an impressive selection of craft beers and wines by the glass.

336.370.0707 | [LUCKY32.COM](http://LUCKY32.COM)

## PRINT WORKS BISTRO

Located three blocks away, adjacent to Proximity Hotel. Print Works Bistro, employee-owned features classical and modern versions of French bistro dishes created with locally sourced food. There are more than 75 wines by the glass selections from the Wine Spectator Award of Excellence list and a craft cocktail list that changes with the seasons. The modern dining experience boasts garden views from every window, or creekside garden dining with plenty of shade and cool breezes.

336.379.0699 | [PRINTWORKSBISTRO.COM](http://PRINTWORKSBISTRO.COM)



GREEN VALLEY GRILL

**LUCKY 32**  
SOUTHERN KITCHEN

